



WINNER: ARCHITECT-DESIGNED NEW HOME

Rowe Baetens Architecture, Auckland



Framing the landscape

This renovation sees the rear section of the house reworked and the front raised and built afresh as a contemporary, living space cum viewing platform

Modern architecture's about much more than just having the most glass to access the broadest views. Much as a painting is enhanced by its frame, so too do the lines of a home set off its scenic outlooks.

This renovation features walls of glass in the fully reinvented section of the home but the terrace wall beyond provides scale and perspective to the idyllic lake setting.

Undertaken by architect Tom Rowe, this major home transformation was a game of two halves. The rear section of the home – a surveyor's cottage in another



Preceding pages: This substantial renovation of a lakeside home by architect Tom Rowe involved recladding and reworking the interiors of the rear of the existing house and all but starting again on the front. The exteriors are clad in travertine stone.

Above: Railway sleepers add a natural look to the hard landscaping. On the steeper side of the verandah, the terrace separates off from the home and becomes a walkway or air bridge.

Left: As you were – the basic nature of the original home. Even back then the front of the home was positioned a few steps up from the rear section.



Above: Connected to the land. Large-format sliding doors minimise the number of vertical lines in the lounge which is effectively a sheltered viewing gallery. The stone floor tiles continue from the lounge out to the terrace, further blurring the lines between indoors and out. A nib wall and low glass balustrade frame the setting without detracting from it. The landscaping is built up to terrace height at right, avoiding the need for safety balustrading on this side.

life – was partially retained, with rooms reshuffled to create a new kitchen, dining areas and bedrooms. This was clad afresh in Italian travertine stone and a brand new traditional sloping roof was introduced.

However, the front section of the home has been spectacularly reinvented.

“Together with the new kitchen, bedrooms and bathrooms, and redeveloping the existing basement, the owners wanted a new expansive lounge pavilion and terrace to maximise the setting,” says Rowe.

“To achieve this, we first stripped out

the existing front section of the residence, which was a few steps up from the rear half, and rebuilt from the floor up.”

In contrast to the sloping rear roof, Rowe introduced a boldly contemporary flat roof on the front pavilion. The lounge area is much like an expansive viewing gallery, having double-glazed glass walls and sliders on three sides. The sliding doors were designed to the maximum area to reduce the number of vertical lines that would have otherwise interrupted the 270° view of the picturesque lake and

surrounding hills. However, with so much glass involved, additional unobtrusive structural support was required.

“We used the fireplace as a structural element with its stone facade concealing structural steel to support the glass box and provide an anchor for the roof.”

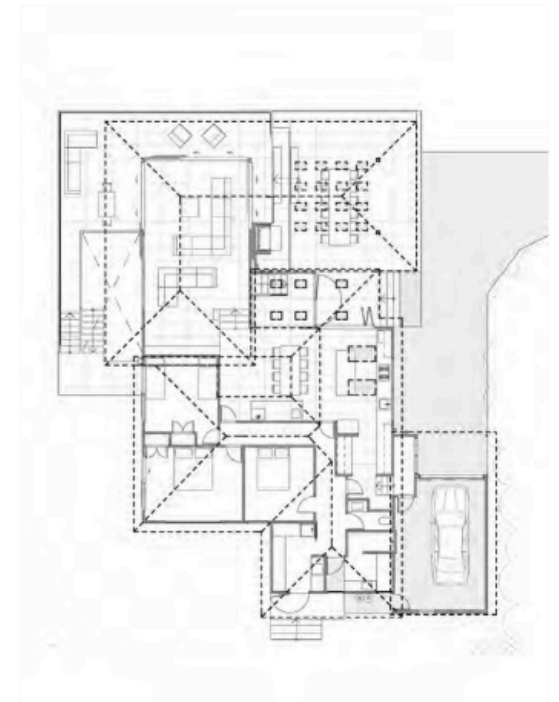
While the new glass viewing lounge takes the same footprint as the old lounge, a covered terrace was built around the raised glass room which increases its sense of space and its flow out to the land.

“The stone terrace platform was created

to expand the home. This has a 3.6m-high verandah roof and is open to the surroundings on three sides.”

The pavilion and terraces are also clad in travertine tile, connecting them to the older part of the home. These are in a plank configuration, laid horizontally to emphasise the horizontality of the home.

On the edge of the terrace, on its high sides, a glass balustrade rises above a stone nib wall – maximising the views. The other side is balustrade-free, with the grounds built up here to meet the terrace.



Plan: The front section of the home – opposite the garage end – has the new, modern lounge pavilion. This is a few steps up from the kitchen and bedrooms, an elevation retained from the original house. The terrace extends out from the glass box on three sides. The footprint is the same as pre-renovation, but the home’s entertaining and living areas have been greatly expanded, largely due to the introduction of the large covered terrace.



These pages: With so much of the home's liveable space outdoors and under cover, the architect came up with a novel way to ensure a warm, natural light on the terrace. The roof is punctuated with square light wells with honey-coloured translucent onyx slabs. These admit natural light by day and are supplemented by artificial light at night. As a playful addition, the outdoor dining table has the same onyx embedded in its top – as though shadows of the amber onyx are playing across its surface.

Story by *Charles Moxham*
Photography by *Sam Hartnett*

Architect: Tom Rowe, Rowe Beetens Architecture
Builder: Antonio Builders
Cladding: Travertine marble from Italian Stone
Roof: Colorsteel, Nuralite membrane
Floors: Travertine
Doors and windows: Wood
Wallcoverings: Gib
Paint: Resene
Heating: Warrington fireplace
Fireplace surround: Travertine
Lighting: Lighting Solutions
Terrace ceiling inserts: Onyx
Furniture: Outdoor dining table, travertine and onyx top

Awards: Trends International Design Awards (TIDA) Homes – Winner

T search and save: **48989**
at [Trendsideas.com](https://www.trendsideas.com)

T see more online: search
[tida home at Trendsideas.com](https://www.tida.com)

T search: **travertine marble**
at [Trendsideas.com](https://www.trendsideas.com)

